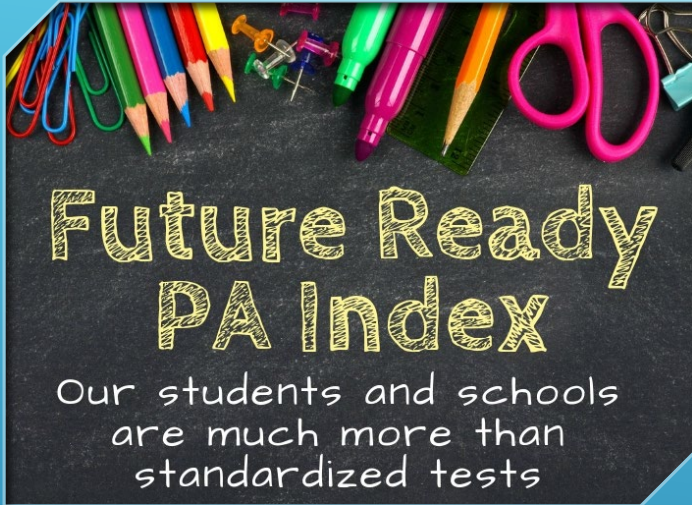




# An Introduction to the Future Ready PA Index

OCTORARA AREA SCHOOL DISTRICT

Presented to the Octorara Area  
School Board on December 3, 2018



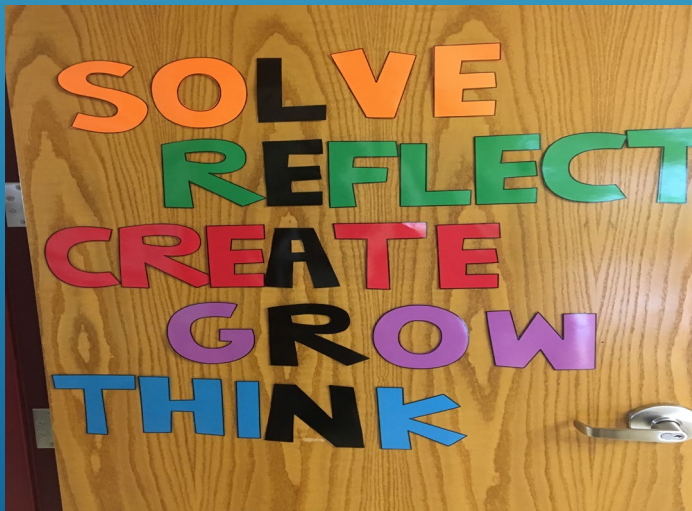
## What is the Future Ready PA Index?

The Future Ready PA Index is the new school measurement tool for communities to evaluate how schools are doing in preparing students for college, career, and community after graduation.

## Why is Pennsylvania adopting the Future Ready PA Index?

Pennsylvanians know that students, and the schools that serve them, are more than just standardized test scores, and wanted a tool for evaluating schools that doesn't rely solely on standardized test results.

In 2015, the state Department of Education started engaging with communities around the state to learn what was important to them and to develop a new measure. As a result, in 2018 Pennsylvania reduced PSSA testing time by 20 percent, and established a new meaningful set of indicators.



# Indicators

## State Assessment Measures

- PSSA & Keystone Proficiency
- Annual Growth
- Percent Advanced on PSSA/Keystones

## On-Track Measures

- English Language Proficiency
- Regular Attendance
- Grade 3 Reading/Grade 7 Mathematics

## College and Career Measures

- Graduation Rate
- Career Standards Benchmark
- Industry-Based Learning
- Percent Advanced on Industry Competency
- Rigorous Courses of Study
- Post-Secondary Transition to School, Military, or Work

The screenshot displays the 'Future Ready PA Index' website for a 'Sample Area School'. The page features a navigation bar with 'School Performance', 'School Fast Facts', and 'District Fast Facts'. Below this, a dropdown menu allows users to 'Select a set of measures to get started', currently set to 'Key for progress measures'. Three main indicator categories are presented: 'State Assessment Measures', 'On-Track Measures', and 'College and Career Measures'. Each category includes a list of specific metrics with progress indicators (arrows and colored circles) and a 'View All' button. The footer contains the Pennsylvania Department of Education logo, copyright information (© 2017), and links for Research, Glossary of Terms, FAQ, Contact Us, and Data Files.

**State Assessment Measures**

- Percent Proficient/Advanced in Mathematics/Algebra I: All Student Group Meets 2030 Statewide Goal (↓)
- Percent Proficient/Advanced in English Language Arts/Literature: Did Not Meet 2030 Statewide Goal/Improvement Targets (↑)
- Academic Growth Expectations in Mathematics/Algebra I: Meets the Standard Demonstrating Growth (●)
- Academic Growth Expectations in ELA/Literature: Did Not Meet the Standard Demonstrating Growth (●)

**On-Track Measures**


- English Language Proficiency: Meets Interim Improvement Target (●)
- Regular Attendance: Meets Performance Standard (●)

**College and Career Measures**

- Career Standards Benchmark: Meets Performance Standard (●)
- Four-year Cohort Graduation Rate: Meets Interim Improvement Target (●)

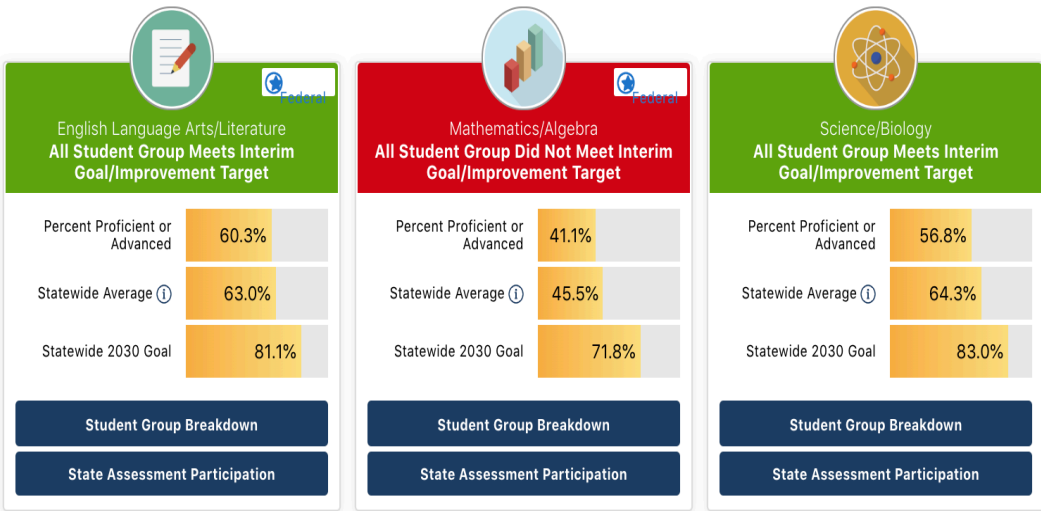
**PSSAs are administered in grade 3-8 in math and English Language Arts and grades 4 & 8 in science. Keystone Exams assess Algebra I, Literature and Biology.**

 State Assessment Measures

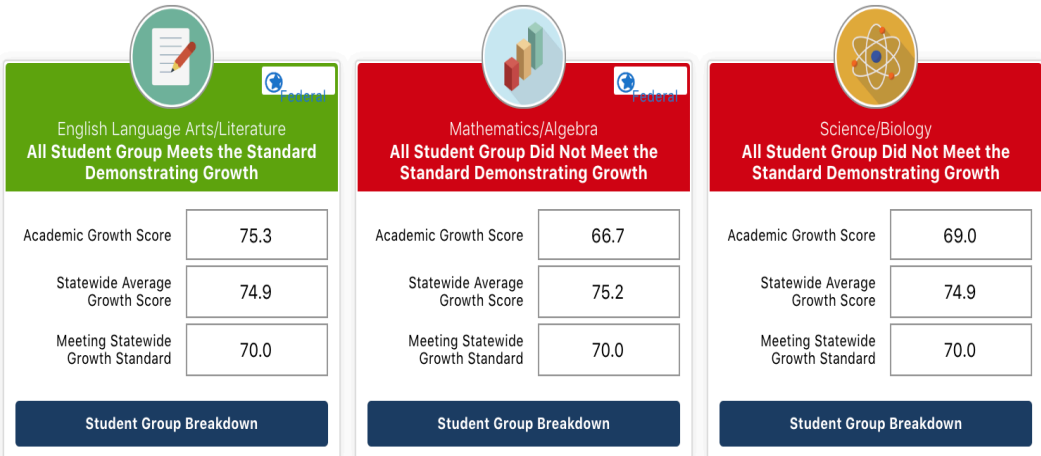
 On-Track Measures

 College and Career Measures

Proficient or Advanced on Pennsylvania State Assessments ⓘ



Meeting Annual Academic Growth Expectations (PVAAS) ⓘ



# Why a dashboard?

Measures displayed on the dashboard are practical, and easy to read and understand.

The dashboard treats the accountability system as a tool for continuous improvement.

Overall school performance is apparent, and areas of strength or in need of improvement are evident.

# Why is the Future Ready PA Index valuable to educators?

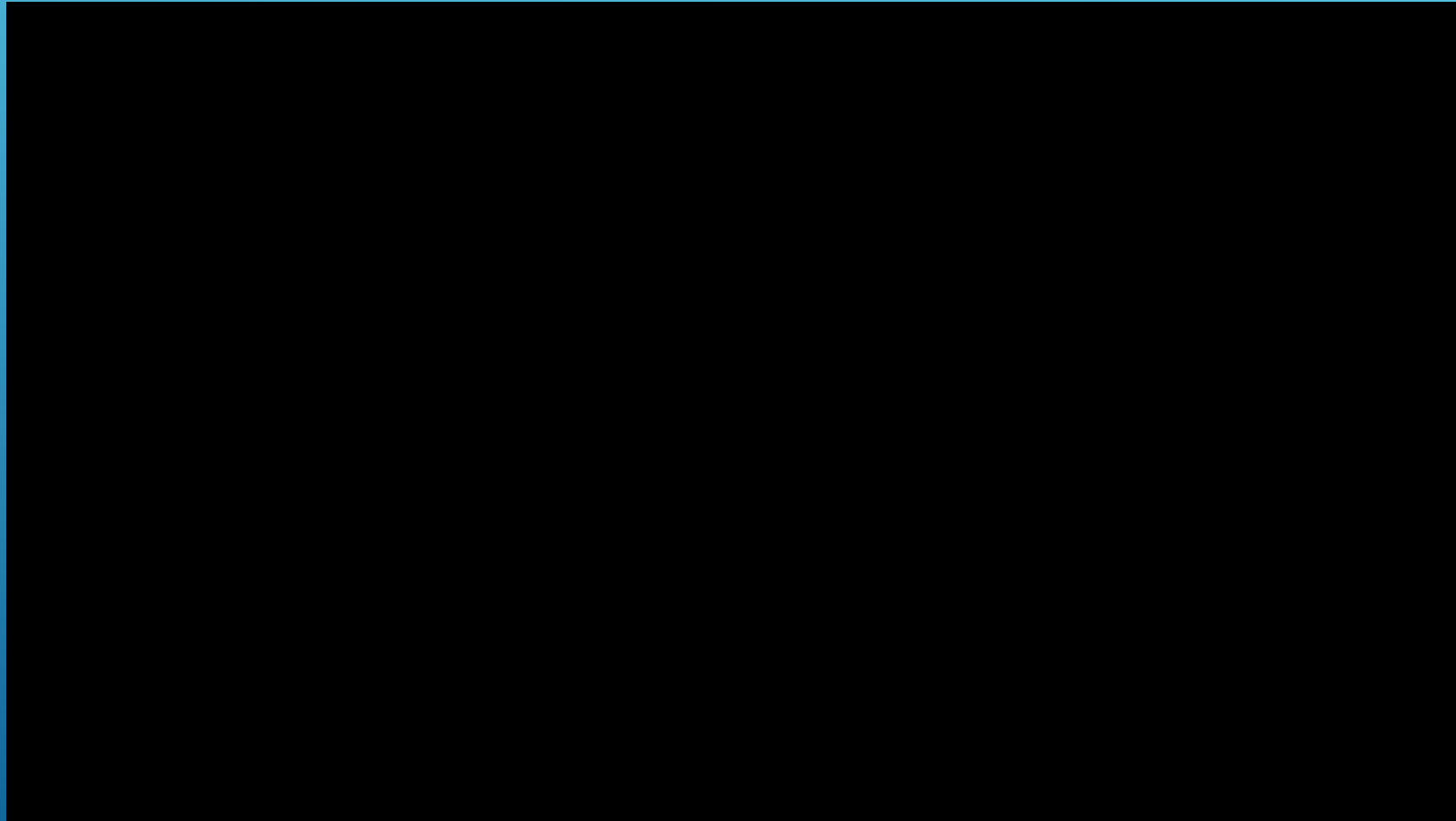


The Future Ready PA Index recognizes that students – and the schools that serve them – are more than just standardized test scores.

The Future Ready PA Index allows educators to determine successes and identify areas for improvement in their schools and programs.

The Future Ready PA Index's easy-to-navigate, advanced search function allows an educator to find schools with similar demographics and collaborate to determine what is working for students in the commonwealth's classrooms.

**Watch a video that will help you learn how to  
navigate the Future Ready PA Index**



<https://youtu.be/rMBFM3wN5hU>

**Octorara Area School District**  
**PA Future Ready Index**  
**OPLC, OES, OIS, and JSHS**



**[www.futurereadyypa.org](http://www.futurereadyypa.org)**



# FEDERAL DESIGNATIONS: ESSA

## 2 Types:

1. Comprehensive Support and Improvement (CSI): the lowest performing 5% of all schools receiving Title I funds in the State and/or any high school with a combined 4- and 5- year adjusted cohort graduation rate of 67% or less
2. Additional Targeted Support and Improvement (A-TSI): performance by one or more subgroups performing below CSI cut points.





▶ **A-TSI Designation:**

- ▶ Based on 2016-2017 AND 2017-2018 Indicators \*unless otherwise indicated
- ▶ 3-year designation with re-designation or exit occurring in 2021-2022
  - ▶ ELA and Math Growth and Achievement is below CSI Threshold
    - ▶ Achievement Threshold=at or below 31.5% (ESSA)
    - ▶ Growth Threshold=Below -1.0 PVAAS (ESSA)
  - ▶ At least one of the following:
    - ▶ Graduation Rate: At or below 79.35%. (ESSA)
    - ▶ EL Proficiency: At or below 31.1% (ESSA)
    - ▶ Regular Attendance: At or below 76.12% (2015-2016/2016-2017)
    - ▶ Career Standards Benchmark: At or below 91.3% (2017-2018)
  - ▶ OR Graduation Rate Only: At or below 67% (2015-2016; 2016-2017)

INDICATORS/MEASURES	OJSHS ECONOMICALLY DISADVANTAGED	OJSHS STUDENTS WITH DISABILITIES
Achievement: Math and ELA Combined	30.3% (31.5%)	16.2% (31.5%)
Growth: Math and ELA Combined	-4.41 (-1.0)	-2.43 (-1.0)
Graduation Rate	77.47% (79.35%)	69.47% (79.35%)

# OCTORARA JUNIOR SENIOR HIGH SCHOOL: **A-TSI DESIGNATION**

- ▶ Begin this year to develop and implement an improvement plan (4-year plan)
  - ▶ Stakeholder input
  - ▶ IU support
  - ▶ Online tool and resources to be developed for rollout for the start of the 2019-2020 school year
  - ▶ Due June 30, 2019
  - ▶ Public release of accountability determinations late this week



WHAT ARE THE NEXT STEPS?



QUESTIONS?

***FUTURE READY PA INDEX***